

## Net Appendix to: The Transition of Corruption. Institutions and dynamics

The appendix has two tables and two figures referred to with and A, such as Table A2, etc.

Table A1.1. Some descriptive statistics – first 80 countries. Data since 1995

Country	Group	<i>N</i>	Avr <i>T</i>	Avr <i>D</i>	<i>t</i> -ratio	Country	Group	<i>N</i>	Avr <i>T</i>	Avr <i>D</i>	<i>t</i> -ratio
Afghanistan	As	12	1.41	-1.22	-9.6	Denmark	Nw	23	9.40	2.43	21.6
Albania	Ps	17	3.04	-0.70	-12.3	Djibouti	Af	11	3.18	0.42	4.9
Algeria	M	15	3.13	-1.09	-20.5	Dominica	La	11	5.58	1.72	15.4
Angola	Af	17	1.94	-1.35	-10.8	Dominican R	La	17	3.05	-1.00	-11.9
Argentina	La	23	3.20	-1.75	-15.1	Ecuador	La	21	2.64	-1.04	-12.2
Armenia	Ps	17	3.04	-0.46	-5.8	Egypt	M	21	3.20	-0.46	-5.4
Australia	Nw	23	8.51	1.47	13.8	El Salvador	La	20	3.77	0.24	2.8
Austria	Nw	23	7.73	0.77	7.0	Equatorial G.	Af	8	1.86	-5.14	-48.4
Azerbaijan	Ps	19	2.32	-1.45	-11.8	Estonia	Ps	20	6.34	1.17	14.6
Bahrain	M	15	5.11	-1.79	-8.1	Ethiopia	Af	17	2.93	0.31	2.6
Bangladesh	As	18	2.09	-0.58	-4.2	Finland	Nw	23	9.32	2.55	20.1
Barbados	La	13	7.17	2.55	14.0	France	Sw	23	6.93	0.22	3.1
Belarus	Ps	19	3.18	-1.32	-5.2	Gabon	Af	14	3.21	-1.38	-13.0
Belgium	Sw	23	7.00	0.19	1.6	Gambia	Af	15	2.83	0.19	1.6
Benin	Af	14	3.24	0.61	5.1	Georgia	Ps	17	3.81	0.25	1.1
Bolivia	La	22	2.81	-0.22	-3.2	Germany	Nw	23	7.93	0.97	12.3
Bosnia	Ps	15	3.46	-0.32	-3.9	Ghana	Af	20	3.88	1.13	12.8
Botswana	Af	20	6.01	1.78	21.5	Greece	Sw	23	4.37	-1.64	-10.8
Brazil	La	23	3.77	-0.33	-4.3	Guatemala	La	19	2.86	-0.55	-7.2
Bulgaria	Ps	20	3.85	-0.52	-5.4	Guinea	Af	12	2.21	-0.41	-4.1
Burkina Faso	Af	14	3.52	0.90	8.1	Guinea-Bissau	Af	11	1.96	-0.65	-8.6
Burundi	Af	13	2.07	-0.56	-9.1	Haiti	La	16	1.83	-0.80	-13.3
Cambodia	As	13	2.08	-0.63	-17.8	Honduras	La	19	2.55	-0.45	-6.4
Cameroon	Af	21	2.25	-0.44	-6.1	Hong Kong	As	23	7.83	0.64	8.9
Canada	Nw	23	8.68	1.66	15.1	Hungary	Ps	23	5.00	-0.12	-0.9
Cape Verde	Af	11	5.46	2.04	25.4	Iceland	Nw	20	8.78	1.81	10.6
CAR	Af	12	2.24	-0.38	-6.2	India	As	23	3.20	0.31	7.2
Chad	Af	14	1.88	-0.76	-15.5	Indonesia	As	22	2.57	-0.76	-13.3
Chile	La	23	7.10	2.40	14.0	Iran	M	15	2.64	-2.11	-14.0
China	As	23	3.43	-0.07	-1.0	Iraq	M	15	1.74	-2.01	-10.5
Colombia	La	23	3.46	-0.43	-4.2	Ireland	Nw	23	7.61	0.47	2.4
Comoros	Af	11	2.53	-0.10	-1.6	Israel	Sw	22	6.53	0.09	0.6
Congo, Bra	Af	15	2.32	-0.72	-4.3	Italy	Sw	23	4.57	-2.16	-18.6
Congo, Kin	Af	15	2.05	-0.57	-15.6	Jamaica	La	18	3.66	0.12	1.3
Costa Rica	La	20	5.18	1.05	8.8	Japan	As	23	7.14	0.33	3.4
Côte d'Ivoire	Af	20	2.56	-0.15	-1.5	Jordan	M	21	4.86	1.27	9.4
Croatia	Ps	19	4.10	-1.05	-13.1	Kazakhstan	Ps	19	2.62	-1.98	-9.8
Cuba	La	14	4.27	0.76	8.5	Kenya	Af	21	2.26	-0.43	-8.9
Cyprus	Sw	15	6.01	-0.23	-2.6	Korea N	As	6	0.90	-1.73	-27.7
Czech R	Ps	22	4.77	-1.16	-11.3	Korea S	As	23	4.92	-1.32	-20.3

Table A1.2. Some descriptive statistics – last 86 countries

Country	Group	<i>N</i>	Avr <i>T</i>	Avr <i>D</i>	<i>t</i> -ratio	Country	Group	<i>N</i>	Avr <i>T</i>	Avr <i>D</i>	<i>t</i> -ratio
Kuwait	M	15	4.48	-3.44	-21.7	Qatar	M	15	6.47	-2.23	-15.8
Kyrgyzstan	Ps	16	2.31	-0.61	-13.6	Romania	Ps	21	3.60	-0.83	-13.6
Laos	As	13	2.44	-0.60	-5.2	Russia	Ps	22	2.51	-2.27	-12.9
Latvia	Ps	20	4.44	-0.41	-6.2	Rwanda	Af	13	4.27	1.65	4.5
Lebanon	M	15	2.85	-1.68	-14.4	Saint Lucia	La	6	6.57	2.74	8.6
Lesotho	Af	13	3.86	1.15	6.9	Sao Tome	Af	11	3.65	0.86	4.2
Liberia	Af	12	3.20	0.57	3.1	Saudi Arabia	M	15	4.23	-2.60	-18.6
Libya	M	15	2.11	-3.44	-15.1	Senegal	Af	20	3.51	0.86	7.3
Lithuania	Ps	19	5.02	-0.03	-0.4	Serbia	Ps	18	3.26	-0.83	-6.6
Luxembourg	Nw	21	8.43	0.80	10.5	Seychelles	As	13	4.87	-0.69	-6.0
Macedonia	Ps	16	3.56	-0.51	-4.1	Sierra Leone	Af	15	2.55	-0.06	-0.6
Madagascar	Af	16	2.82	0.20	2.1	Singapore	As	23	9.01	1.94	10.0
Malawi	Af	20	3.24	0.62	6.0	Slovakia	Ps	20	4.37	-0.94	-11.3
Malaysia	As	23	4.96	0.17	1.1	Slovenia	Ps	19	6.06	0.00	0.0
Mali	Af	15	3.01	0.39	6.3	South Africa	Af	23	4.72	0.71	6.0
Malta	Sw	14	5.81	-0.16	-1.0	Spain	Sw	23	6.24	-0.12	-0.9
Mauritania	Af	12	2.78	0.00	0.0	Sri Lanka	As	15	3.48	-0.12	-1.4
Mauritius	As	20	4.98	0.21	2.6	Sudan	Af	15	1.63	-1.16	-9.7
Mexico	La	23	3.33	-1.03	-12.1	Swaziland	Af	11	3.44	-0.21	-1.5
Moldova	Ps	19	2.95	0.02	0.2	Sweden	Nw	23	9.12	2.17	22.0
Mongolia	Ps	15	3.32	-0.30	-1.9	Switzerland	Nw	23	8.76	1.37	17.2
Montenegro	Ps	11	4.05	-0.73	-14.0	Syria	M	15	2.41	-0.82	-5.5
Morocco	M	19	3.62	0.23	2.6	Taiwan	As	23	5.73	-1.02	-35.3
Mozambique	Af	17	2.80	0.18	2.6	Tajikistan	Ps	15	2.17	-0.58	-14.4
Myanmar	As	15	1.85	-1.08	-14.3	Tanzania	Af	20	2.83	0.19	1.9
Namibia	Af	20	4.84	1.21	9.6	Thailand	As	23	3.41	-0.62	-11.6
Nepal	As	14	2.65	0.00	-0.1	Togo	Af	12	2.78	0.17	1.8
Netherlands	Nw	23	8.73	1.62	16.2	Trinidad	La	16	3.94	-1.89	-5.5
New Zealand	Nw	23	9.32	2.98	28.9	Tunisia	M	19	4.51	0.57	4.2
Nicaragua	La	19	2.66	-0.25	-4.3	Turkey	M	22	3.92	-0.67	-7.6
Niger	Af	14	2.91	0.28	2.2	Turkmenistan	Ps	13	1.83	-2.88	-12.8
Nigeria	Af	22	2.05	-0.94	-10.5	UAE	M	15	6.42	-1.71	-8.3
Norway	Nw	23	8.70	1.06	8.6	Uganda	Af	21	2.49	-0.13	-2.6
Oman	M	15	5.15	-1.73	-6.1	UK	Nw	23	8.22	1.41	11.9
Pakistan	As	22	2.47	-0.43	-5.9	Ukraine	Ps	20	2.49	-1.18	-13.8
Palestine	M	3	2.70	-0.12	-0.8	Uruguay	La	20	6.07	1.54	8.2
Panama	La	17	3.51	-1.17	-9.1	USA	Nw	23	7.47	0.10	1.6
Paraguay	La	18	2.26	-1.20	-21.7	Uzbekistan	Ps	19	2.03	-1.30	-8.5
Peru	La	20	3.77	0.13	0.9	Venezuela	La	23	2.21	-2.01	-10.3
Philippines	As	23	2.93	-0.31	-4.1	Vietnam	As	21	2.78	-0.16	-6.4
Poland	Ps	22	4.85	-0.14	-1.1	Yemen	M	15	2.15	-0.72	-7.5
Portugal	Sw	23	6.32	0.51	4.3	Zambia	Af	20	3.16	0.44	4.7
Puerto Rico	La	7	5.86	-0.96	-6.0	Zimbabwe	Af	20	2.50	-0.17	-1.3

Note: Country names are as short as possible. R means republic. The 166 have at least 6 observations that can be paired with the corresponding income observation. The *t*-ratio is for the *D*-index. The country groups are: Af is Sub-Saharan Africa; As is Asia and Oceania incl Mauritania and Seychelles; La is Latin America and Caribbean; M is MENA, i.e. Middle East and North Africa. Ps is Post Socialist, Nw is North West, Sw is South West.

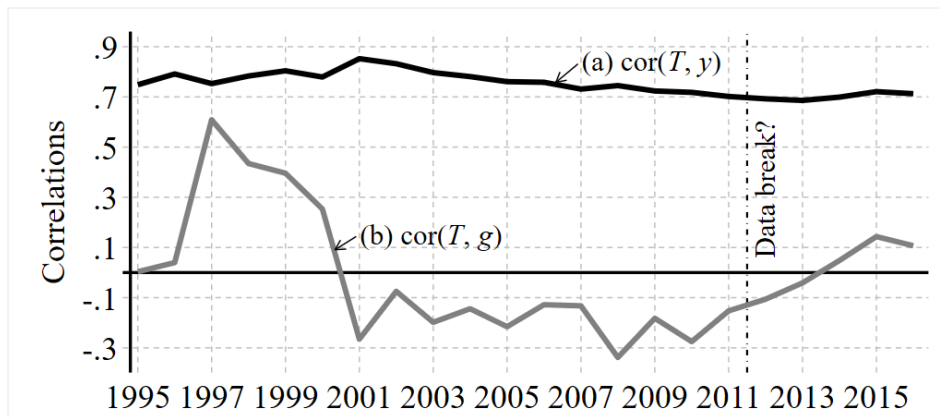
Table A2. Descriptive stats for country groups

	Number of		Averages				
	Countries	N	Income	<i>T</i> -index	<i>D</i> -index	<i>t</i> -ratio	Slope
Af, Africa, Sub-Saharan	44	688	7.71	2.99	0.03	-0.90	0.03
As, Asia and Oceania	23	434	8.86	3.79	-0.34	6.57	-0.01
La, Latin America and Caribbean	26	471	9.06	3.96	-0.07	-2.48	-0.03
M, MENA	19	300	9.61	3.77	<b>-1.29</b>	-8.61	-0.06
Ps, Post-communist	29	532	9.24	3.60	-0.73	-6.85	0.03
West (including 4 overseas)	25	552	10.47	<b>7.62</b>	0.81	7.83	-0.06
Sum/Avr.	166	2977	9.10	4.36	-0.14	-2.57	-0.02
West divided into							
Nw, North	16	363	10.6	<b>8.54</b>	<b>1.48</b>	13.75	-0.07
Sw, South	9	189	10.2	5.97	-0.37	-2.70	-0.04

Note: The North West group is the one deviating most from the transition path, while the MENA-group that includes many OPEC countries deviates the opposite side; in accordance with Figures 1 and 2c.

The paper mention that is a break in the way the data is compiled from 2011 to 2012. Figure A1 show two time series of the cross-country correlation  $\text{cor}(T, y)$  and  $\text{cor}(T, g)$  from 1995 to 2016. As seen on Figure A1 there is no break in the series in the data from 2011 to 2012. Thus, the paper disregards the break.

Figure A1. Looking for data-breaks in two annual cross-country correlations



Finally Figure A2 shows how the main variables are distributed, on the overlapping data. The distribution of the *T*-index show the same pattern as Figure 1. Most observations are in the interval from 1.5 to 2.5. Note that the *D*-index is close to the normal distribution. The other indices are all very skew.

Figure A2. The frequency distribution of the eight series discussed – the overlapping data

Figure A2.1.  $T$ -index

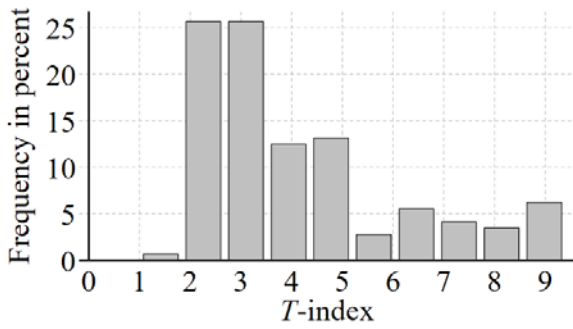


Figure A2.2.  $D$ -index

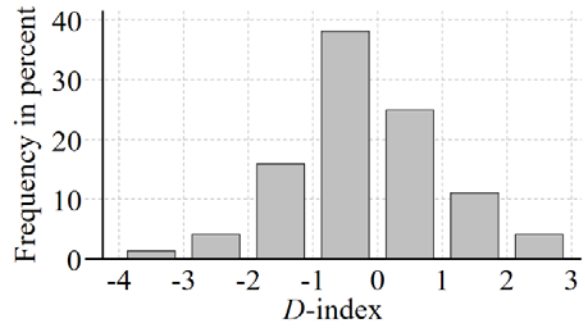


Figure A2.3.  $P$ -index

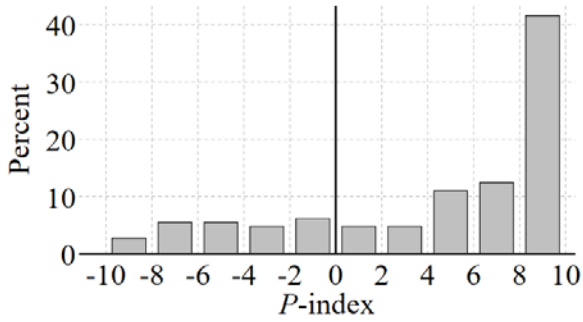


Figure A1.4.  $F$ -index

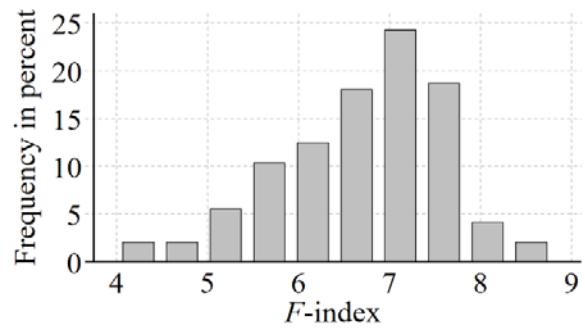


Figure A2.5.  $Income$

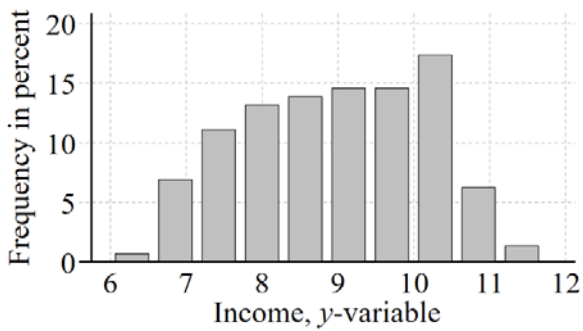


Figure A2.6.  $Z^P$ -variable

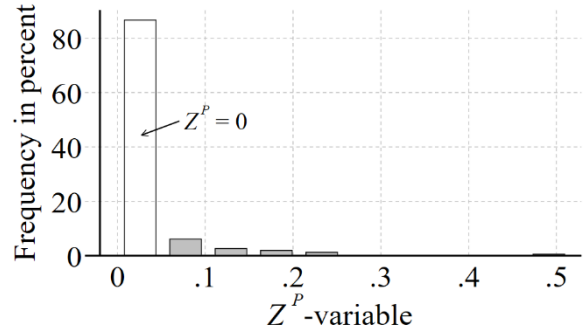


Figure A2.7.  $V^P$ -variable

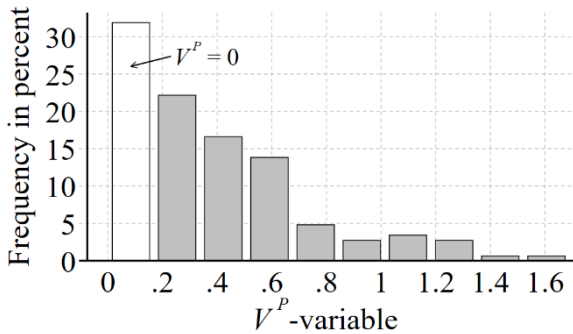


Figure A2.8.  $V^F$ -variable

